

Rhyo

Price Under Request

Powerful and Versatile Fiber Laser with 30W average power

Rhyo is our most powerful fiber laser with 30W average power makes it the perfect tool for Cold processing industrial grade applications and fundamental science applications, all in one.

This versatile pulsed laser allows to tune the pulse duration in the picosecond to femtosecond regime and, the repetition rate from single shot to one MHz.

/ Highlights

High Energy Pulse

Single shot to MHz range

Tunable Pulse Duration



Pulse Duration FWHM:

≈ 400 ps

Max Pulse Energy:

30 uJ

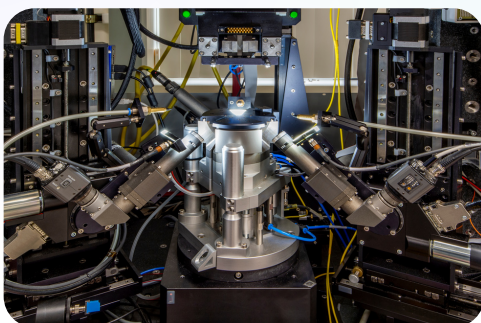
Max Average Power:

30 W

Max Peak Power:

75 kW

/ Applications



Cold processing

Industrial grade applications

Rhyo

/ Accessories

Compressed and Tunable Pulse

Duration of the compressed pulse, FWHM: continuously tunable from 1ps to 20 ps.

Output Max Power: 17 W

Output Max Pulse Energy: 17 μ J

Compression module is mounted inside the laser case

Tunable Repetition Rate

Operation Rep Rate: Tunable from Single Shot to 1 MHz

Burst mode: Selection of arbitrary number of pulses (at operation rep rate)

Output Max Pulse Energy: 15 μ J

Burst module is mounted inside the laser case

Second Harmonic Generation

Dual Output: IR + 532 nm

Max pulse energy: 5 μ J @ 1 ps pulse duration

Max average power: 5 W at 1MHz Rep Rate

Optical Output: collimated free space

Third Harmonic Generation

Dual Output: IR + 354 nm

Max pulse energy: 1 μ J @ 1 ps pulse duration

Max average power: 1 W at 1MHz Rep Rate

Optical Output: collimated free space



Rhyo

/ Technical Specifications

Max Pulse Energy:	Max Average Power:	Max Peak Power:	Pulse Duration FWHM:
30 μ J	30 W	75 kW	\approx 400 ps

Central wavelength:	1064 nm
Repetition Rate:	1 MHz
Output power electronic control:	From 0 to 30 W
Average Power Stability (24h):	< 1 % (std. dev.)
Output polarization:	Linearly Polarized; PER > 23 dB
Optical output:	Collimated Output
Beam Diameter:	2 mm (1/e ² @ 1064 nm, 0.5 m from output)
M2 Parameter:	< 1.3
Beam Divergence:	<15 mrad (at 1064 nm)
Trigger Synch Output:	TTL *
Half-angle Beam Divergence:	2.1 mm or 3.5 mm (1/e ²)
Cooling:	Integrated Peltier + air cooling
Power Requirements:	24 V (30A)
Operating Temperature:	15 - 30 °C
Storage Temperature	0 - 60 °C

OTHER DETAILED SPECS UNDER REQUEST

Rhyo

/ Additional information



Laser Security:

This product is a Class 4 laser.

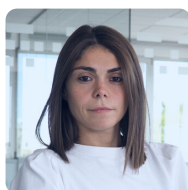
Appropriate safety measures according to such laser class should be taken in its installation and use.

Warranty:

24 months warranty or > 10,000h of continuous operation.

Extended warranty on request.

/ FYLA contact



Sales contact

Gaia Sardiello

gsardiello@fyla.com

+34 674 94 75 29

Support contact

support@fyla.com

+34 607 97 10 21