

Pulsar

Extreme Pulse Control & Tunability

Pulsar is a complete laser system enabling pulse energy and repetition rate tunability, offering the user an unmatched level of versatility. With the independent adjustment of three key parameters: repetition rate (MHz to 1 Hz), pulse energy (10 pJ to 10 nJ), and pulse duration (≤ 300 fs).

Pulsar is an ideal laser for nonlinear optics applications, especially two-photon and three-photon absorption spectroscopy and microscopy.

/ Highlights

Pulse Energy Selection
Repetition Rate Selection

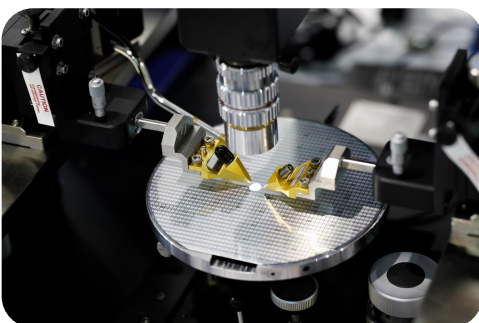


**Repetition Rate
Tunability (Pulse Train):**
1 Hz to 10 MHz

Pulse Duration:
 ≤ 300 fs

Pulse Energy Tunability:
10 pJ to 10 nJ

/ Applications



TPA- TCT

Two-photon and three-photon
absorption spectroscopy and
microscopy.

Pulsar

/ Technical Specifications

Repetition Rate Tunability (Pulse Train):
1 Hz to 10 MHz

Pulse Duration:
 ≤ 300 fs

Average Power:	100 mW @10 MHz
Pulse Duration:	≤ 300 fs
Central Wavelength:	1560 nm
Repetition Rate:	10 MHz (Fundamental)
Power Stability:	< 1 % (std. dev.)
Polarization:	Linearly Polarised
Optical Output:	Free Space
Synchronization / Connections:	TTL (SMA) - USB - Interlock
Beam Diameter:	2.1 mm or 3.5 mm (1/e ²)
Spatial Mode Quality (M ²):	< 1.2
Cooling:	Thermoelectric cooler + air cooling
Power Requirements:	220 V / 110V - 50/60 Hz
Operating Temperature:	20 - 30 °C
Storage Temperature	0 - 60 °C
Electromechanical Shutter Output:	Rise-time: 1 ms, Sync. to Pulse train
Control Software:	User-friendly

OTHER DETAILED SPECS UNDER REQUEST

Pulsar

/ Additional information



Laser Security:

This product is a Class 3B laser.

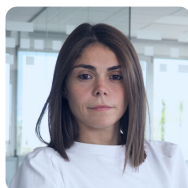
Appropriate safety measures according to such laser class should be taken in its installation and use.

Warranty:

12 months warranty

Extended warranty on request.

/ FYLA contact



Sales contact

Gaia Sardiello

gsardiello@fyla.com

+34 674 94 75 29

Support contact

support@fyla.com

+34 607 97 10 21