

Iceblink^{V3}

Supercontinuum Fiber Laser

Iceblink is a supercontinuum fiber laser covering the 450-2300 nm spectral range with over 3W of average power and superior stability (<0.5% std. dev.).

The spatial coherence and broad spectrum of the Iceblink makes it a great alternative to a classic lamp, single-line lasers, LEDs and ASE sources.

It is a very versatile white light source with a world of applications in the scientific and industrial sectors, including absorption/transmission measurements for material characterization, VIS, NIR and IR spectroscopy, single molecule spectroscopy and fluorescence excitation.

Spectral Range

450 - 2300 nm

Average Power

≥ 3 W

Visible Range (450-850 nm)

Average Power:

≥ 150 mW

/ Highlights

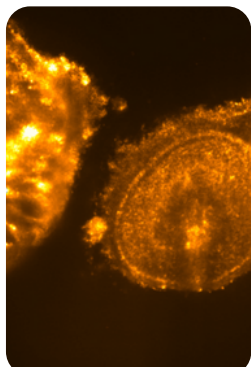
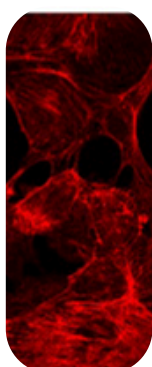
VIS+NIR Power Balanced

Outstanding Power Stability

150 mW Average Power in Visible Range



/ Applications



Microscopy (FRET, TIRF, CLSM...)

Absorption / Transmission / Reflection Spectroscopy

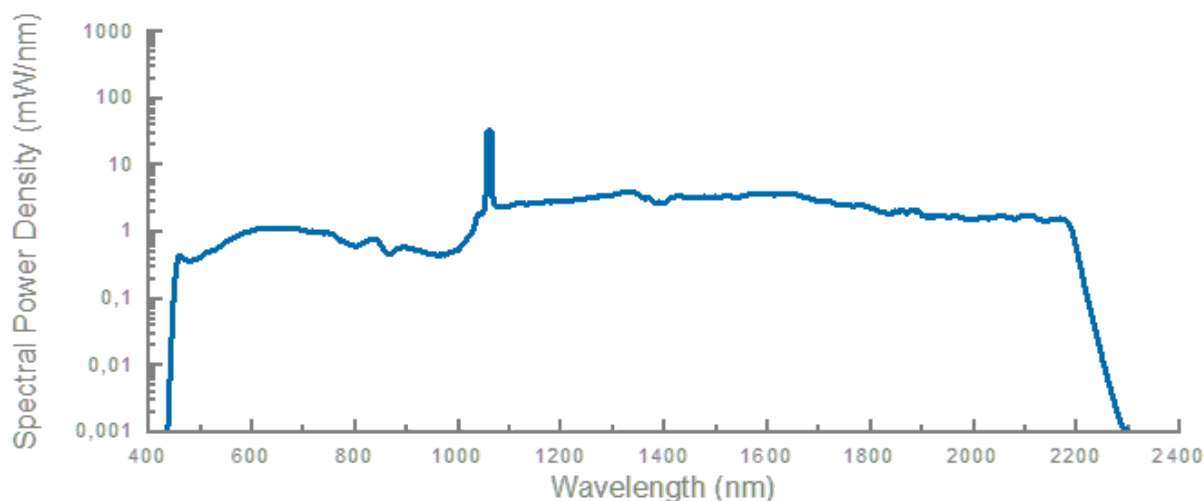
Optical Device Characterization

Metrology

Hyperspectral Imaging

Iceblink^{v3}

/ Optical Spectrum



/ Accessories

Tunable Visible Range

BOREAL and BOREAL NIR are the accessories for supercontinuum lasers to choose any wavelength.

The perfect white laser plug-in accessory for bioimaging, nanophotonic and more.



Spectral Range:

400* - 1000 nm / 1000 - 1700 nm

Optical Output:

Free space or Fibre output (1 m) (Collimated output customizable)

Bandwidth:

10 - 600 nm

Simultaneous selectable band:

1

Resolution:

1 nm

Insertion losses (full bandwidth):

≤ 10 % (free space output)

≤ 30 % (Multimode fibre output)

≤ 60 % (Single-mode fibre output)

* Initial wavelength depends on the supercontinuum source

Iceblink^{V3}

/ Technical Specifications

Spectral Range:

450 - 2300 nm

Average Power:

≥ 3 W

Visible Range (450-850 nm)

Average Power: ≥ 150 mW

Repetition Rate:	80 ± 2 MHz
Pulse Duration:	≤ 10 ps (@ 1060 nm) / ≤ 250 ps full spectrum*
Average Power Stability:	≤ 0,5 % (std. dev.)
Polarization:	Unpolarized
Output Port:	Single Mode Fiber. 1 m length (customizable)
Optical Output:	Collimated (in the range 450-1000 nm), Single-mode across full spectrum
Synchronization / Connections:	TTL (SMA); NIM (SMA) Under request
Beam Diameter @ 1 m of distance:	@ 470nm ≤ 2mm / @ 580nm ≤ 2.5mm / @ 725nm ≤ 3.5mm / @ 1150nm ≤ 5.5mm
Spatial Mode Quality (M ²):	≤ 1.2
Cooling:	Thermoelectric cooler + air cooling
Power Requirements:	110 – 220 V, 50/60 Hz.
Operating Temperature:	20 - 30 °C
Storage Temperature:	0 - 60 °C
Dimensions:	436x560x151 (WxDxH)
Control :	Manual / Software via USB
Safety Connections:	Interlock / Key



151 mm

436 mm



560 mm

OTHER DETAILED SPECS UNDER REQUEST

*Estimated value

Rev. 04

Iceblink^{v3}

/ Additional information



Laser Security:

This product is a Class 4 laser.

CAUTION – VISIBLE AND INVISIBLE LASER RADIATION
AVOID EYE AND SKIN EXPOSURE TO DIRECT OR SCATTERED
RADIATION.

Appropriate safety measures according to such laser class
should be taken in its installation and use.

Warranty:

12 months warranty.

Extended warranty on request.



/ FYLA contact

Sales contact

sales@fyla.com

+34 607 97 10 21