

Boreal NIR^{V1}

Tunable NIR Range

BOREAL is the accessory for supercontinuum lasers to choose any wavelength in the NIR range.

The perfect white laser plug-in accessory for bioimaging, nanophotonic and more.

Spectral Range

1000 - 1700 nm

Optical Output

Free space output

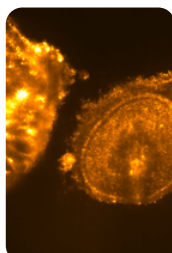
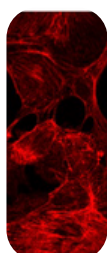


/ Highlights

Accessory for Supercontinuum Lasers

Plug-in-accessory

/ Applications



Bioimaging

Nanophotonic

Boreal NIR^{V1}

/ Technical Specifications

Spectral Range

1000 - 1700 nm

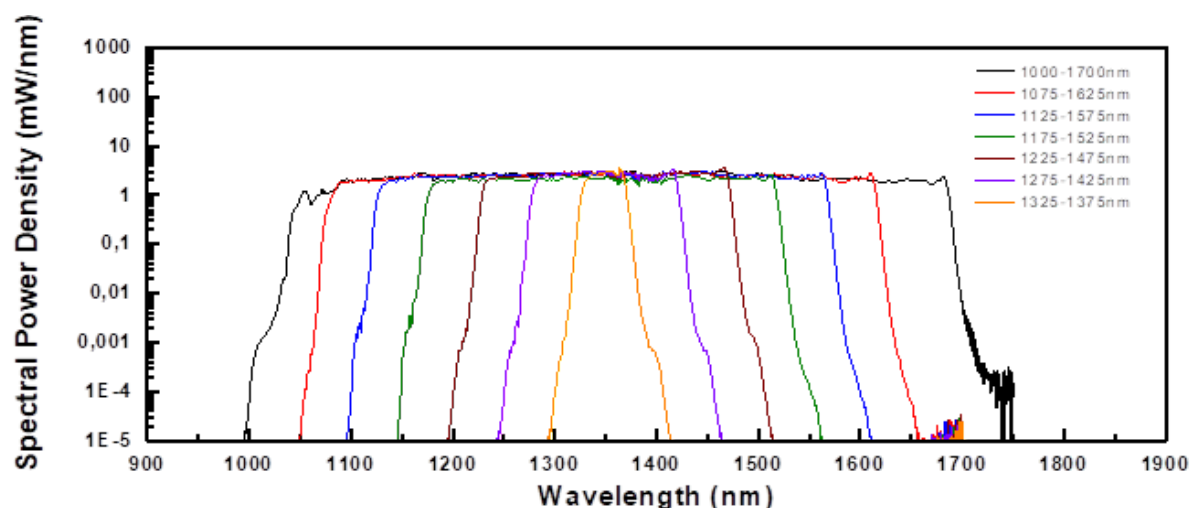
Optical Output

Free space output

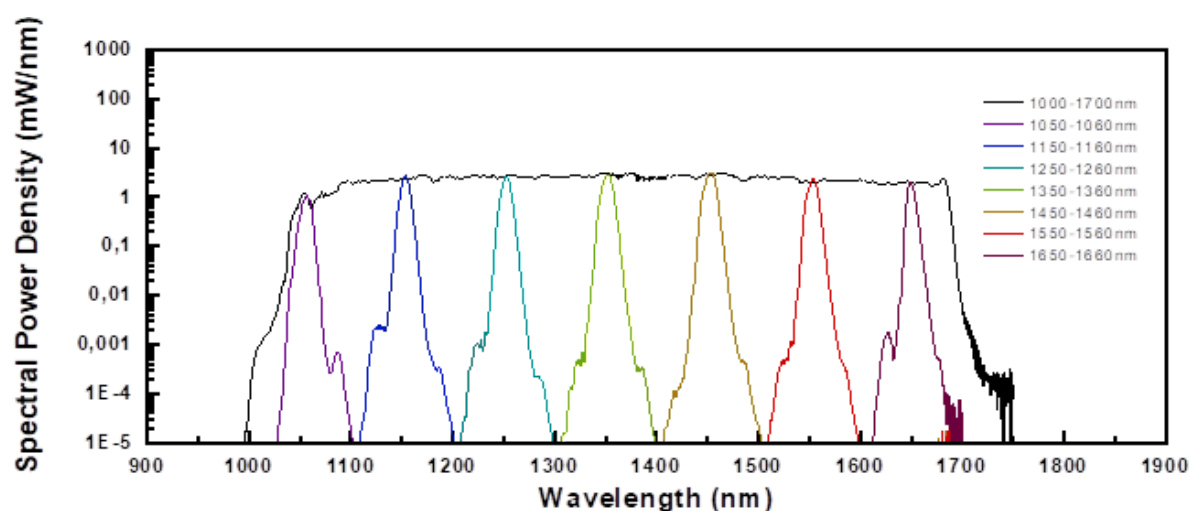
Output Polarization:	Unpolarized
Power Requirements	110V – 220V 50/60 Hz
Connections:	IN – Coupling holder (Laser) IN – Power supply IN – USB port (System control)
Displayed Parameters (Controlled):	Min/Max wavelength selection Central wavelength/Bandwidth selection
Control Modes:	Remote (USB port)
Operating Temperature:	20 - 30 °C
Storage Temperature:	0 - 60°C
Bandwidth:	10 - 700 nm
Simultaneous selectable band:	1
Resolution:	1 nm
Insertion losses (full bandwidth):	≤ 20 % (free space output)

Boreal NIR^{v1}

Supercontinuum laser emission filtered into different bands, maintaining the central wavelength while decreasing the bandwidth from 700 nm to 50 nm in 50 nm steps



Supercontinuum laser emission filtered in different bands of 10 nm bandwidth and central wavelength progressively tuned with 100 nm steps.



Boreal NIR^{V1}

/ Additional information



This product is an accessory for a Class 4 laser, and its output may contain class 3B radiation. It is not a finished laser product and therefore does not include the safety features required for a Class 3B laser product.

CAUTION – CAN HARM THE EYES DURING DIRECT EXPOSURE TO THE BEAM OR TO SPECULAR REFLECTIONS, BUT SCATTERED RADIATION CANNOT HARM THEM, AND THEY ARE HARMLESS FOR THE SKIN.

Warranty:

12 months warranty.

Extended warranty on request.

/ FYLA contact

Sales contact

sales@fyla.com

+34 607 97 10 21