

# Arche

## World's most cost-effective femtosecond laser

A suite of ultrafast fiber lasers with 100 MHz range repetition rates, centered at 1560nm, delivering < 500 fs. Arche becomes a workhorse tool for many research and industrial applications requiring reliability and affordability.



**Central Wavelength**  
1560 nm

**Repetition Rate**  
100 MHz

**Average Power**  
> 4 mW

**Pulse Duration**  
< 500 fs

### / Applications



Amplifier Seeding  
Optical Characterization  
Ultrafast Spectroscopy  
Testing at telecom wavelengths

# Arche

## / Technical Specifications

Wavelength:	Repetition Rate	Pulse Duration:	Average Power:
1560 nm	100 MHz	< 500 fs	> 4 mW

Central wavelength:	1560 nm
---------------------	---------

Repetition Rate:	100 MHz (customizable to 50 MHz)
------------------	----------------------------------

Average Power:	> 4mW
----------------	-------

Pulse Duration:	< 500 fs
-----------------	----------

Polarization:	Linearly Polarized
---------------	--------------------

Output Port:	Single Mode Fiber / 0.25 m
--------------	----------------------------

Optical Output:	FC/APC Connector
-----------------	------------------

Synchronization:	Optical Signal
------------------	----------------

Pulse Energy:	> 40 pJ
---------------	---------

Spatial Mode Quality (M <sup>2</sup> ):	< 1.2
-----------------------------------------	-------

Cooling:	Air cooling
----------	-------------

Power Requirements:	220/110V 50-60 Hz
---------------------	-------------------

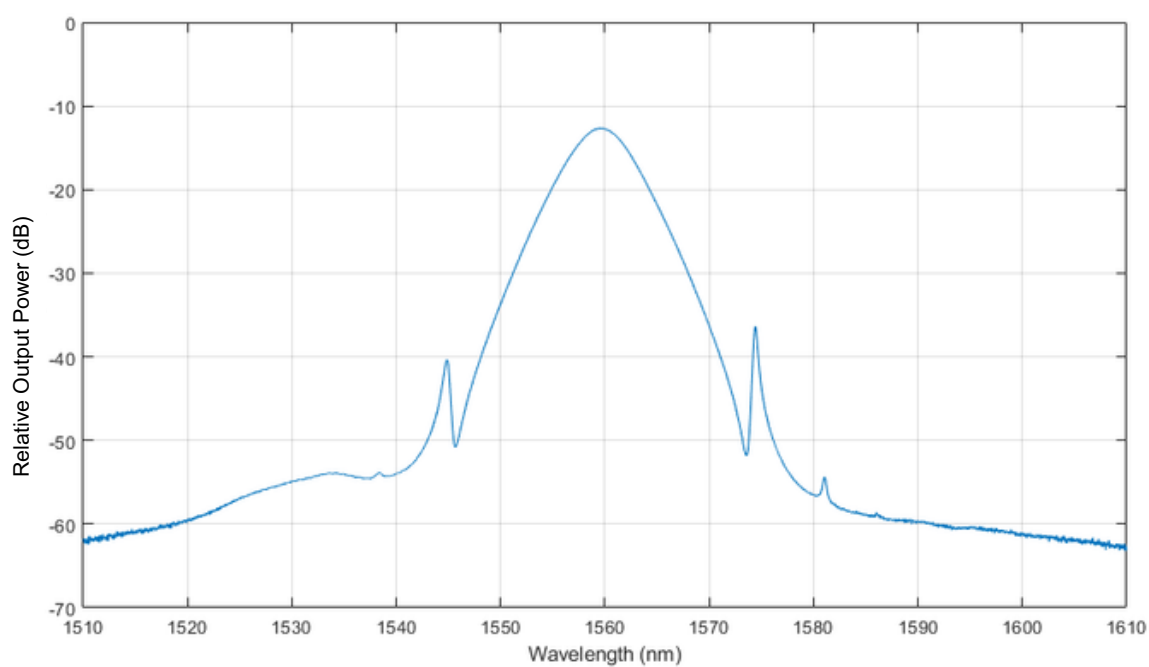
Operating Temperature:	20 - 30 °C
------------------------	------------

Storage Temperature	0 - 60 °C
---------------------	-----------

OTHER DETAILED SPECS UNDER REQUEST

# Arche

/ Optical Spectrum



# Arche

## / Additional information



### Laser Security:

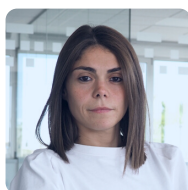
This product is a Class 1 laser.

Appropriate safety measures according to such laser class should be taken in its installation and use.

### Warranty:

12 months warranty or > 10,000h of continuous operation.

## / FYLA contact



### Sales contact

Gaia Sardiello

gsardiello@fyla.com

+34 674 94 75 29

### Support contact

support@fyla.com

+34 607 97 10 21

\*The price may be different in the APAC area.